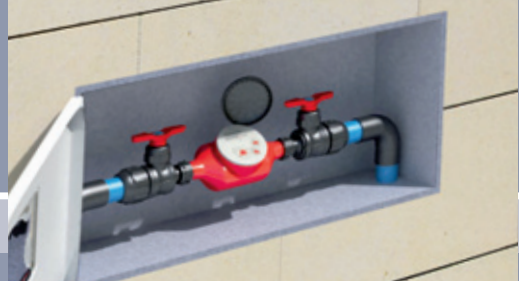


PP ball valves



Specifications and characteristics

STANDARDS:

Jimten ball valves, or the elements they are components of, fulfill the following standards among others:

Threaded:

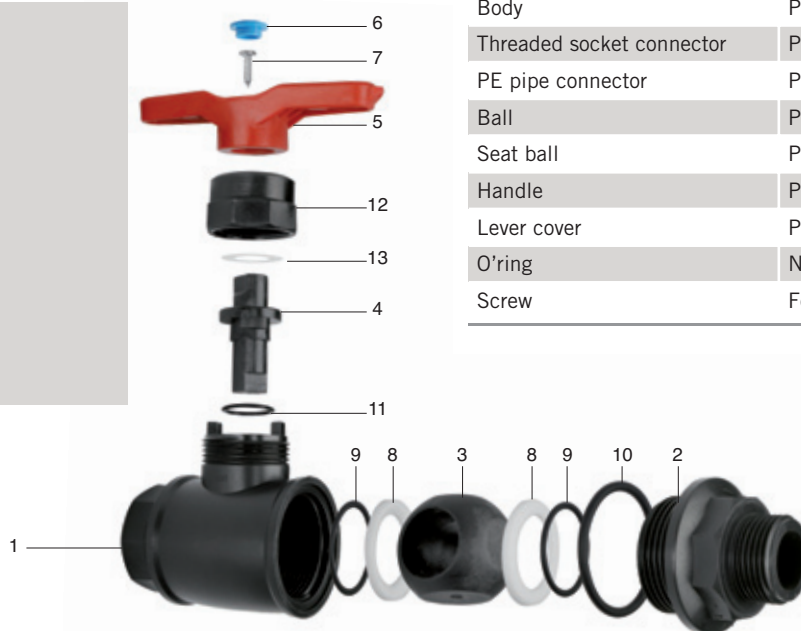
ISO R7, UNI 338, DIN 2999, UNE 19009

PE pipe connectors:

UNE EN 715, 911, 713, 711 E, ISO 3501, ISO 3503, ISO 3458, ISO 3459.

Components

- 1.- Body
- 2.- Connector
- 3.- Ball
- 4.- Stem
- 5.- Handle
- 6.- Lever cover
- 7.- Screw
- 8.- Seat
- 9.- Seat o'ring
- 10.- Connect o'ring
- 11.- Stem o'ring
- 12.- Union
- 13.- Washer



Materials

Body	PPFV
Threaded socket connector	PPFV
PE pipe connector	PPFV
Ball	PPFV
Seat ball	PTFE
Handle	PPFV
Lever cover	PE
O'ring	NBR FPM
Screw	Fe/Zn

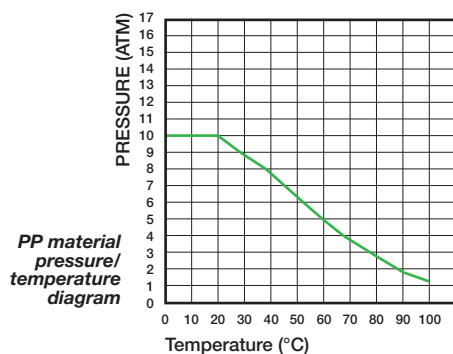
Table of nominal pressures

Diameter	DN (mm)	PN (bar)
≤ 63	≤ 2"	≤ 50
		10

NOMINAL PRESSURES

The PN table gives the service pressure operating with water at 20 °C. To obtain other coefficients, pressure reduction coefficients have to be applied according to the temperature and material.

Load loss



PP ball valves

