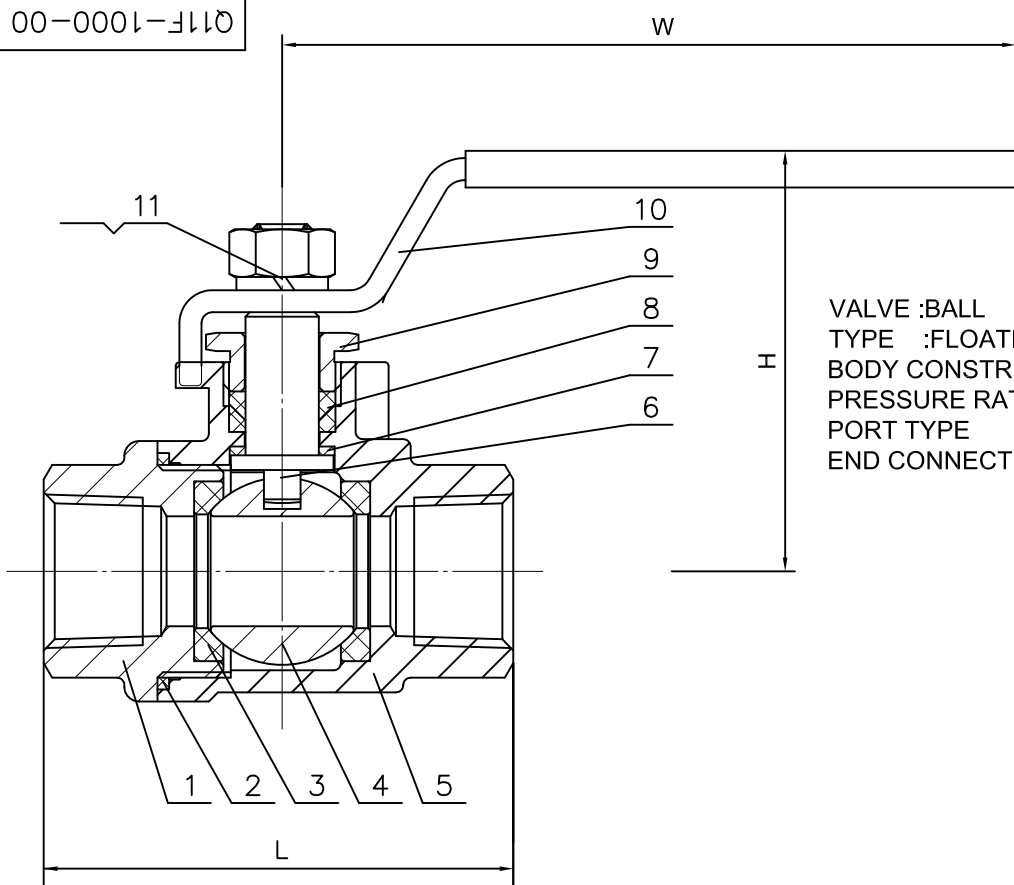


Q11F-1000-00



VALVE :BALL  
 TYPE :FLOATING BALL  
 BODY CONSTRUCTION :2 PIECE  
 PRESSURE RATING :1000 WOG  
 PORT TYPE :FULL PORT  
 END CONNECTION :THREADED FEMALE BSPP

SPECIFICATIONS		
Nominal pressure		1000PSI
TESTING PRESSURE	Shell testing	10.4
	Seat testing	7.6
	Backseat testing	MPa
	Air seat testing	
Max, Temperature		-29~120 °C

DN	NPS	L	H	W
6	1/4"	55	48	95
10	3/8"	53	48	93
15	1/2"	63	60	105
20	3/4"	72	65	115
25	1"	85	78	140
32	1 1/4"	100	85	155
40	1 1/2"	108	98	170
50	2"	121	100	175
65	2 1/2"	156	135	230
80	3"	177	135	235
100	4"	224	160	320

NO.	NAME	Material	Remark
11	Spring washer	SS.	
10	Handle	SS201/304	
9	Gland	SS.	
8	Packing	PTFE	
7	Gasket	PTFE	
6	Stem	A182 F304/F316	
5	Body	A351 CF8/CF8M	
4	Ball	SS304/SS316	
3	Seal gasket	PTFE	
2	Oring	PTFE	
1	Cap	A351 CF8/CF8M	

1000PSI		Q11F-1000-00	
NPS 1/4"~4"		DRAW MARK	SCALE
2PC BALL VALVE		DRAW REV.	
ASSEMBLE DRAWING			