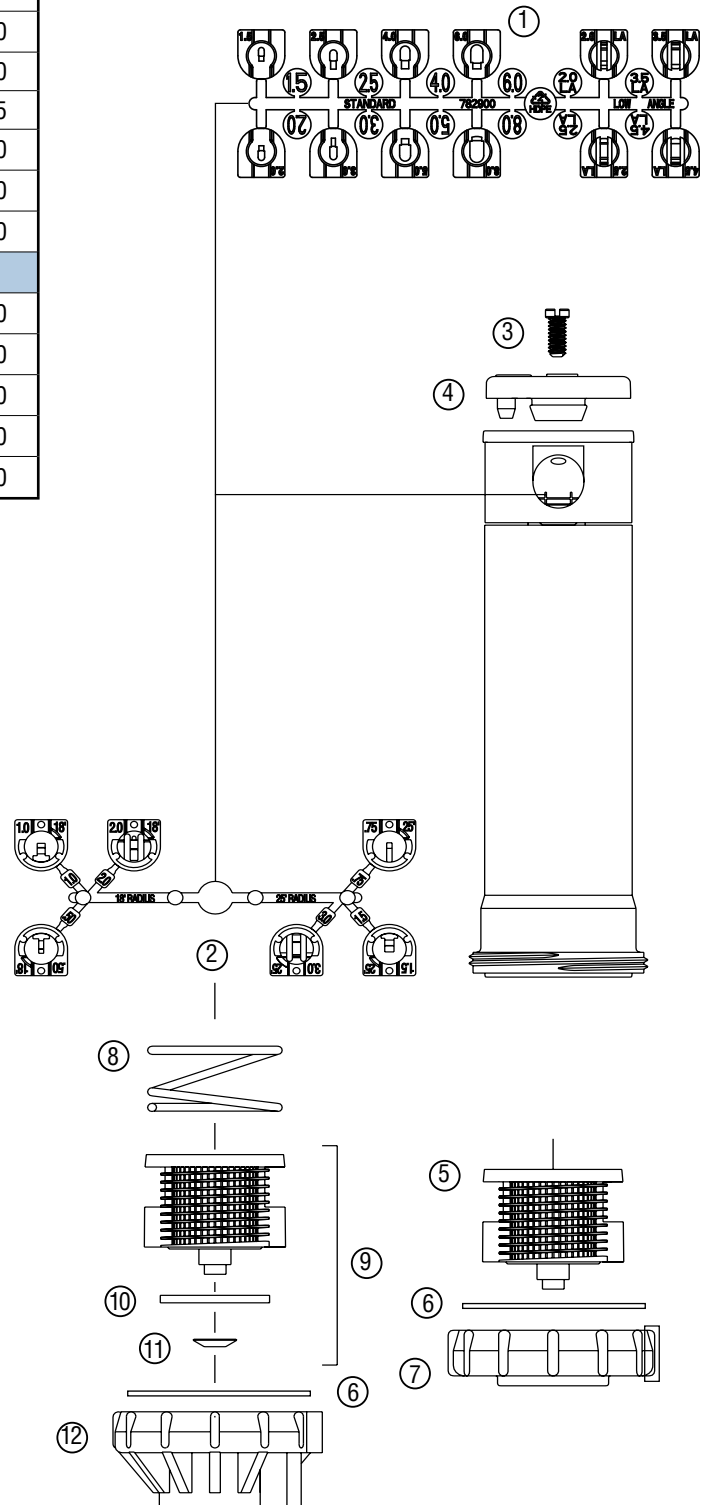


PGP®-00: Gear-Driven Sprinkler

| Item | Description | Catalog No. | |
|----------------|--|-------------------|--------|
| ① | Standard (8) and Low Angle (4) Nozzle Set, Blue & Gray | 782900 | |
| ② | Short Radius Nozzle Set (6), Black | 466100 | |
| ③ | Nozzle Retainer Screw - Headed w/ Slot | 180900 | |
| ④ | Rubber Cover Assembly | Black | 183600 |
| | | Purple | 183605 |
| ⑤ | Standard Filter Screen (<i>Black</i>) | 102600 | |
| ⑥ | O-Ring | 170600 | |
| ⑦ | Standard Shrub Head Base | 106900 | |
| Options | | | |
| ⑧ | Check Valve Spring | 235000 | |
| ⑨ | Filter Screen/Check Valve Sub Assembly | 142300 | |
| ⑩ | Check Valve Seal | 101400 | |
| ⑪ | Retainer Clip | 204900 | |
| ⑫ | Shrub Head Base | Check Valve Model | 234900 |



PGP®-04 Ultra, PGP-12 CV Ultra: Gear-Driven Sprinklers

| Item | Description | Catalog No. |
|------|--|--|
| ① | Standard (8) and Low Angle (4) Nozzle Set, Blue & Gray | 782900 |
| ② | Short Radius Nozzle Set (6), Black | 466100 |
| ③ | Nozzle Retainer Screw - Headed w/ Slot | 180900 |
| ④ | Rubber Cover Assembly | Black 183600 Purple 183605 |
| ⑤ | Filter Screen | Standard Model 102600 |
| ⑥ | Check Valve Screen Assembly | 142300 |
| ⑦ | Body Cap | 103700 |
| ⑧ | Slip Washer | PGP-12-CV-Only 296100 |
| ⑨ | Riser Seal | 181500 |
| ⑩ | Spring Seat | 189900 |
| ⑪ | Retraction Spring | PGP-04 104000 PGP-04-CV 150600 PGP-12-CV 179500 |
| ⑫ | Pop-up Body | PGP-04 100200 PGP-12-CV 179100 |
| ⑬ | Check Valve Seal Only | 101400 |
| ⑭ | Retainer Clip | 204900 |
| ⑮ | Seal Replacement Kit (Includes Parts 9 & 10) | 253400 |

