

General Description

2/2 way normally closed/normally open – servo assisted.
Soft close function, brass solenoid valve.

Typical applications include water, air, mechanical services, irrigation and general industry.

Technical Details

Function: Normally Closed & Normally Open
Valve Design: Servo Assisted, Anti Water Hammer
Body: Brass
Seat: NBR
Operator: Stainless Steel
Duty Cycle: Continuous operation 100% ED
Media: Non aggressive media up to 40 CST
Viscosity (e.g. Air & Water)
Installation: As required, preferably upright.
Life Expectancy: Hundreds of thousands of cycles.
Options: B35 available with Manual Override.



Normally Closed (Energize to Open)

Model	Function	Port Size (BSP)	Orifice (mm)	CV	Media Pressure (BAR)	Media Temperature	Weight (Kg)	Rebuild Kit #
B35-2-10-*N	N.C.	1/4	10	2.3	0.3 - 10	-10°C - 80°C	0.5	RK-B35-4N
B35-3-10-*N	N.C.	3/8	10	2.3	0.3 - 10		0.5	
B35-4-10-*N	N.C.	1/2	10	3	0.3 - 10		0.5	
B35-4-14-*N	N.C.	1/2	14	5	0.3 - 10		0.6	RK-B35-414N
B35-5-14-*N	N.C.	3/4	14	5	0.3 - 10		0.65	
B35-5-20-*N	N.C.	3/4	20	10	0.3 - 16		1.35	RK-B35-6N
B35-6-20-*N	N.C.	1	20	11	0.3 - 16		1.2	
B35-7-40-*N	N.C.	1 1/4	40	28	0.7 - 16		2.45	RK-B35-8N
B35-8-40-*N	N.C.	1 1/2	40	34	0.7 - 16		2.45	
B35-9-50-*N	N.C.	2	50	50	0.7 - 16		3.8	RK-B35-9N

Normally Open (Energize to Close)

Model	Function	Port Size (BSP)	Orifice (mm)	CV	Media Pressure (BAR)	Media Temperature	Weight (Kg)	Rebuild Kit #
B36-2-14-*N	N.O.	1/4	14	3	0.3 - 10	-10°C - 80°C	0.6	RK-B36-4N
B36-3-14-*N	N.O.	3/8	14	4	0.3 - 10		0.6	
B36-4-14-*N	N.O.	1/2	14	5	0.3 - 10		0.6	
B36-5-20-*N	N.O.	3/4	20	10	0.3 - 16		0.8	RK-B36-6N
B36-6-20-*N	N.O.	1	20	14	0.3 - 16		1.1	
B36-7-40-*N	N.O.	1 1/4	40	28	0.7 - 16		2.6	RK-B36-8N
B36-8-40-*N	N.O.	1 1/2	40	34	0.7 - 16		2.6	
B36-9-50-*N	N.O.	2	50	50	0.7 - 16		3.75	RK-B36-9N

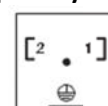
*Voltage code: 1 – 240vAC, 2 – 110vAC, 5 – 24vAC, 7 – 12vDC, 8 – 24vDC, 11 – 415vAC

Electrical Data

Construction: Encapsulated Coil c/w LED connector plug
Plug Connection: DIN 43650A. 2 pin + Earth plug with PG11 cable connector.
Voltage Tolerance: +10% to -10%
Coil Insulation: Class F
Protection: IP65

Connector Plug (with LED)

1 & 2 input terminals
(Non polarity conscious)



Earth Terminal

**GENERAL PURPOSE BRASS SOLENOID VALVE
NORMALLY CLOSED / NORMALLY OPEN**

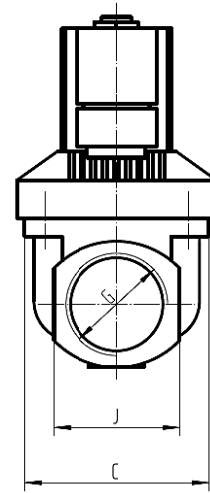
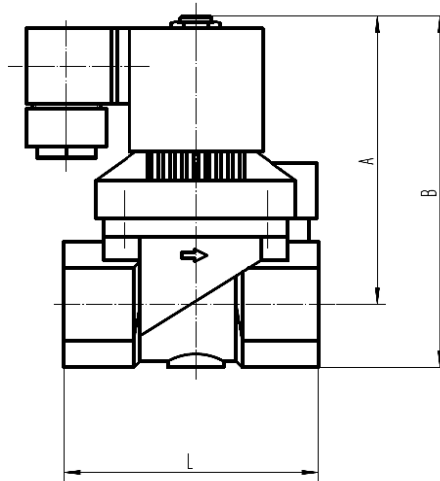
**SERIES
B35/B36**

Dimensions

Normally Closed

Model	G	L	A	B	C
B35-2-10	¼	50	70	85	38
B35-3-10	3/8	50	70	85	38
B35-4-10	½	50	70	85	38
B35-4-14	½	64	75	90	45
B35-5-14	¾	64	78	95	45
B35-5-20	¾	82	95	115	65
B35-6-20	1	82	95	115	65
B35-7-40	1 ¼	133	105	135	92
B35-8-40	1 ½	133	105	135	92
B35-9-50	2	160	115	150	108

¼" – 1"



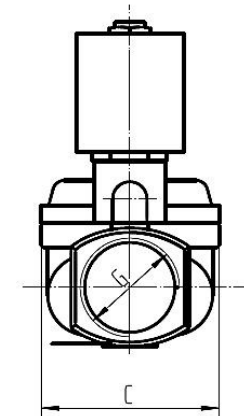
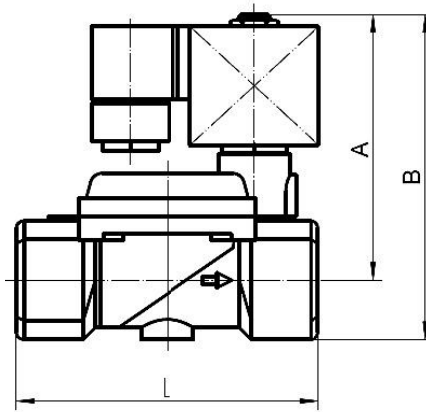
Quality
ISO 9001
SAI GLOBAL
JAS-ANZ



Normally Open

Model	G	L	A	B	C
B36-2-14	¼	64	95	110	40
B36-3-14	3/8	64	95	110	40
B36-4-14	½	64	95	110	40
B36-5-20	¾	82	108	130	65
B36-6-20	1	82	108	130	65
B36-7-40	1 ¼	135	110	139	92
B36-8-40	1 ½	135	110	139	92
B36-9-50	2	160	120	155	108

1 ¼" – 2"



Coil Specifications

B35 Normally closed 1/4" – 2"

Voltage	Current		Voltage Code *
	Inrush	Holding	
12v DC	1.38A	1.03A	7
24v DC	0.6A	0.47A	8
24v AC	0.79A	0.761A	5
110v AC	0.112A	0.109A	2
240v AC	0.066A	0.062A	1

Coil Part Number: SC-N12-*

B36 Normally open 1/4" – 1"

Voltage	Current		Voltage Code *
	Inrush	Holding	
12v DC	1.84A	1.3A	7
24v DC	0.72A	0.52A	8
24v AC	0.803A	0.772A	5
110v AC	0.217A	0.204A	2
240v AC	0.106A	0.099A	1

Coil Part Number: SC-N13-*

B36 Normally open 1 1/4" – 2"

Voltage	Current		Voltage Code *
	Inrush	Holding	
12v DC	1.84A	1.3A	7
24v DC	0.72A	0.52A	8
24v AC	0.803A	0.772A	5
110v AC	0.217A	0.204A	2
240v AC	0.106A	0.099A	1

Coil Part Number: SC-N14-*



Irrigation Express
Online irrigation supplies