

# Model MS

## Multi-Jet Magnetic Water Meter

The Multi Jet Silver is a revolutionized water-meter with superior performances which exceeds all known products in the industry. The meter offers very accurate registration in extreme flows, contributing to the revenues of the assigned customer.

- **Applications**

For domestic, agriculture and industrial use.

- **Available Sizes**

1½" - 2" (40mm - 50mm)

- **Standards**

MID 2004/22/EC (based on OIML R49  
EN 14154 and ISO 4064:2005),  
AWWA C708, NSF61, WRAS

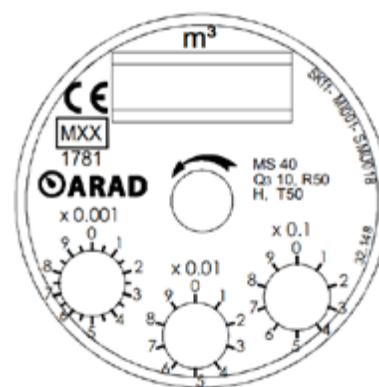
### Features:

By incorporating revolutionized hydraulic design the meter has superior performances:

- Incorporates unique magnetic transmission which avoids disconnection
- Eliminates any previous installment requirements for straight pipe section of 10D 5D upstream and downstream respectively
- Optional Electrical Output: EV, EF, Dialog 3G, ER.

### Technical Specifications

<b>Maximum Working Pressure</b>	10 bar
<b>Maximum Working Temperature</b>	50°C
<b>Body</b>	Corrosion proof copper alloy Cast iron upon request
<b>Coupling threads</b>	BSP, NPSM



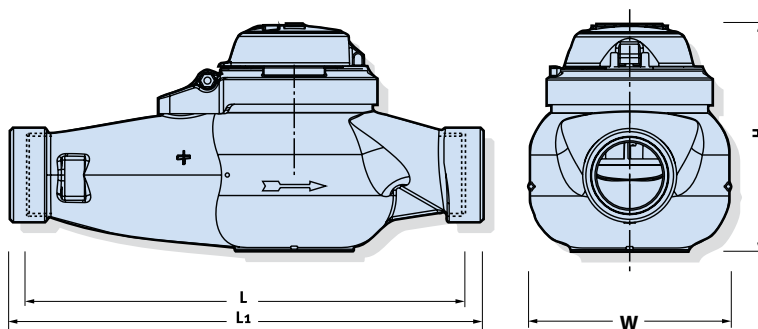
MS type dial

# Model MS

## Multi-Jet Magnetic Water Meter

### Dimensions

Model		MS 40	MS 50
Nominal size	(mm)	40	50
	(inch)	1½	2
L – Length without couplings (mm)		300	300
L1 – Length with couplings (mm)		435	460
B – Width (mm)		125	160
H – Height (mm)		140	190
Weight (kg)		4.1	8
Weight with couplings (kg)		5.1	9.4

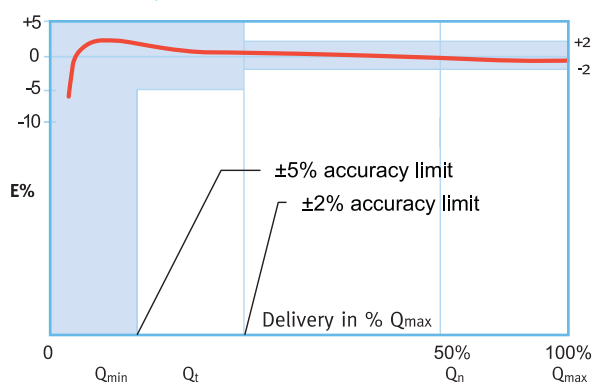


### Performance data:

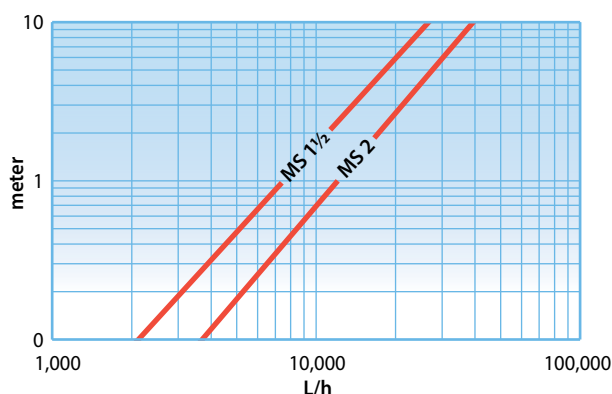
Metrological Characteristics according to MID 2004/22/EC  
(based on OIML R49 EN 14154 and ISO 4064:2005)

Model	Nominal size (inch)	Q1 Minimum Flowrate (m³/h)	Q2 Transitional Flowrate (m³/h)	Q3 Nominal Flowrate (m³/h)	Q4 Maximum Flowrate (m³/h)	R Q3/ Q1	Indicating range	Smallest readable unit (liter)	Accuracy between Q4 & Q2	Accuracy between Q2 & Q1
MS 40	1½	0.10	0.16	10	12.5	100	999,999	0.5	± 2%	± 5%
MS 40	1½	0.20	0.32	16	20	80				
MS 40	1½	0.13	0.205	16	20	125				
MS 50	2	0.32	0.512	16	20	50				

### Accuracy Curve



### Head Loss Curve



### Installation Requirements

- The meter should be installed in horizontal position dial face up.
- Pipeline must be flushed before installation.
- The meter should be constantly full of water.

For the most updated version, please view our website: [www.arad.co.il](http://www.arad.co.il)