

Specifications and characteristics

STANDARDS:

Jimten ball valves, or the elements they are components of, fulfill the following standards among others:

Threaded:

ISO R7, UNI 338, DIN 2999, UNE 19009

PE pipe connector:

UNE 12201, ISO 3501, ISO 3503, ISO 3458, ISO 3459.

Solvent socket:

ISO 727, UNI 7422, DIN 8063, NF T54-028, KIWA 54, UNE EN 1452.

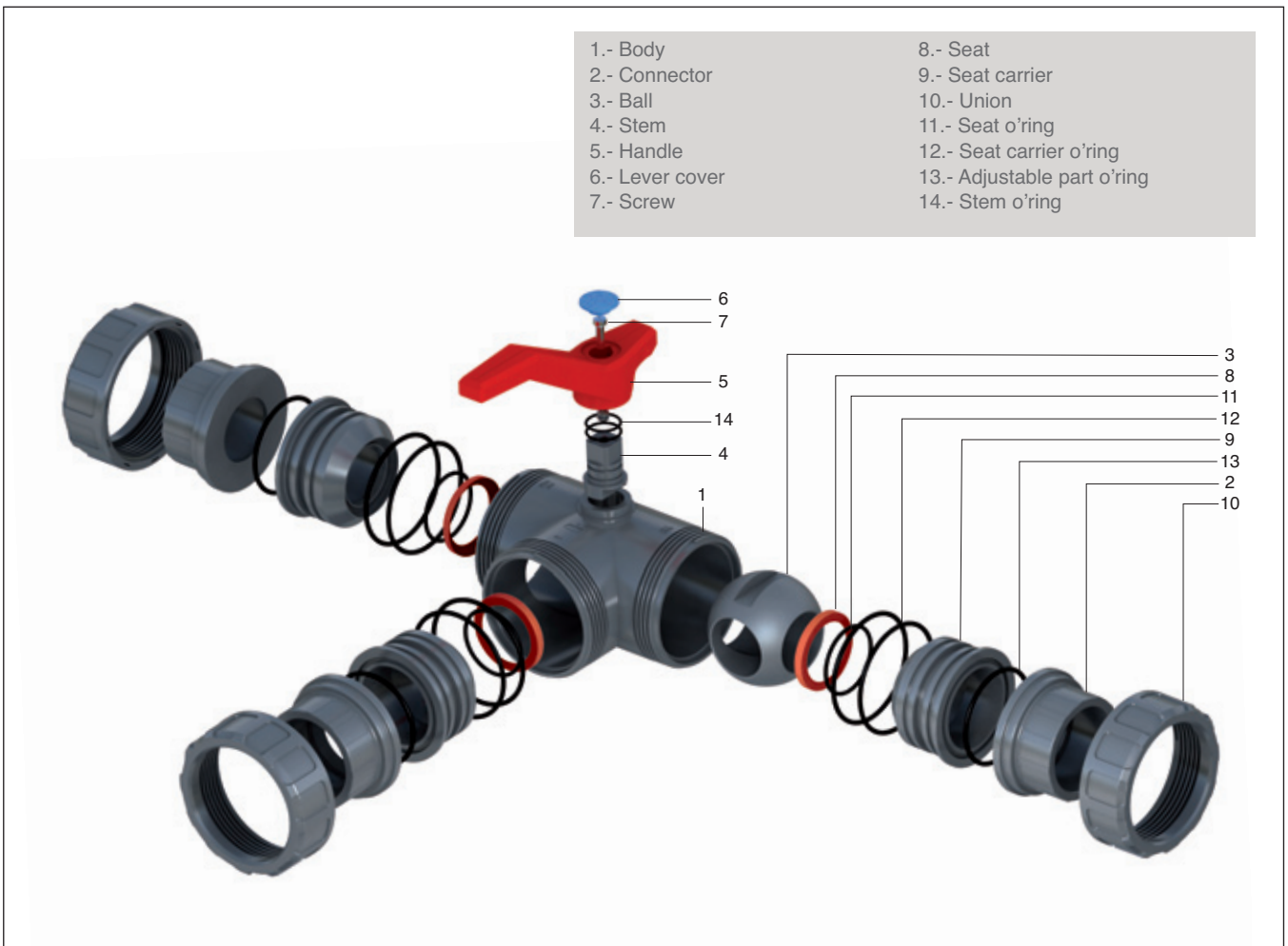
Flanges:

ISO 2084, UNI 7442, DIN 8063, UNE 19153

Materials

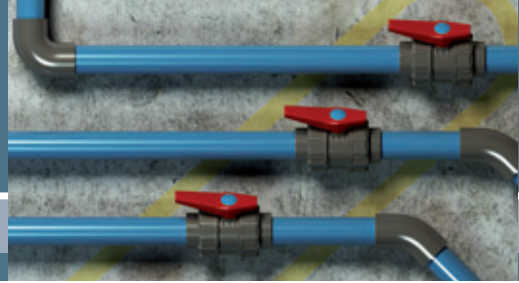
Body	PVC
Solvent socket connector	PVC
Threaded socket connector	PVC
PE pipe connector	PPFV
Flange connector	PVC
Ball	PVC
Seat ball	PTFE
Handle	PPFV
Lever cover	PE
O'ring	NBR FPM
Screw	Fe/Zn

Components



PVC ball valves

Three-way ball valves



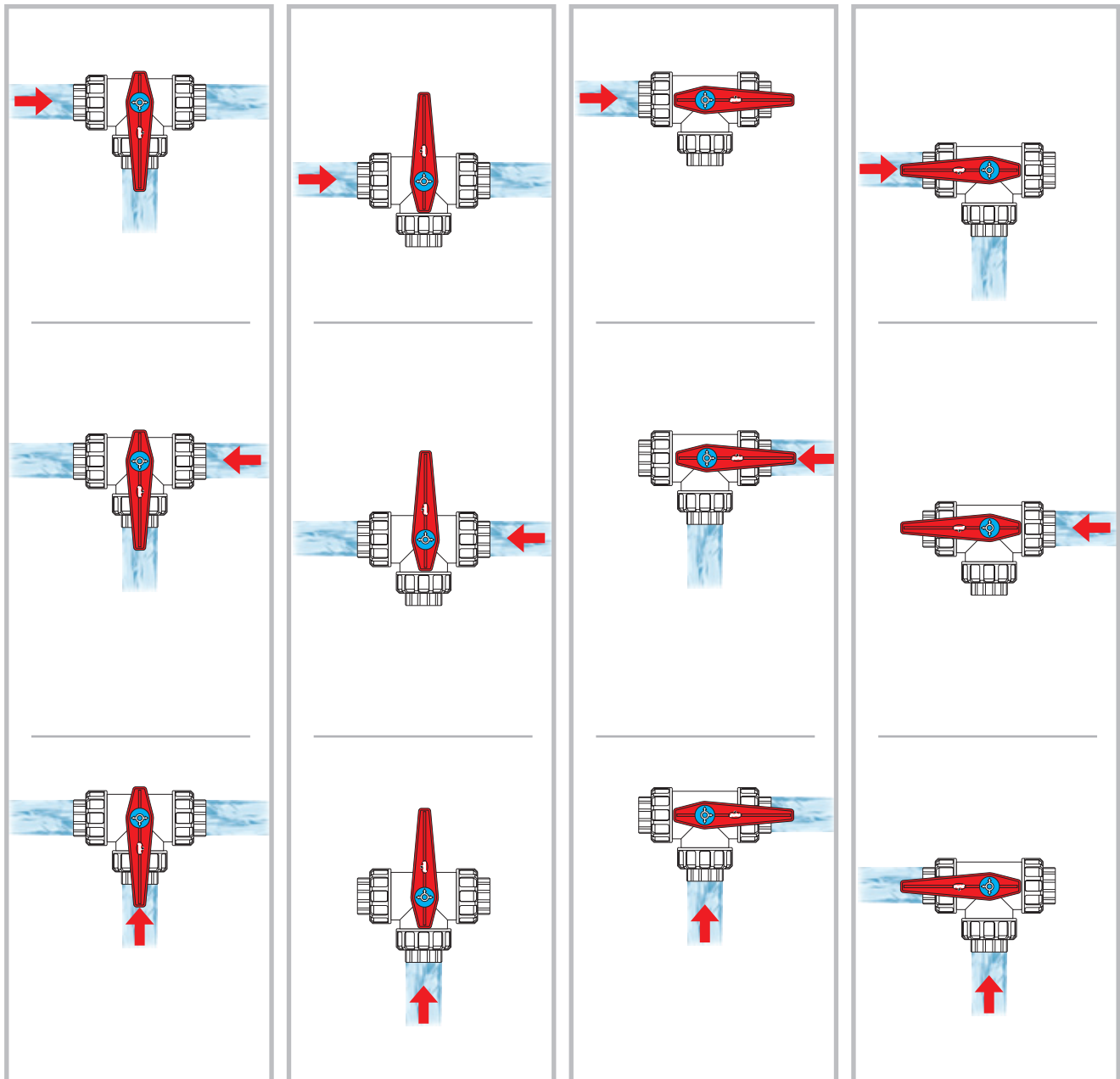
Three-way ball valves - Flow direction

3-way 

2-way 

2-way 

2-way 



NOTE: The short side of the handle indicates which way is closed.

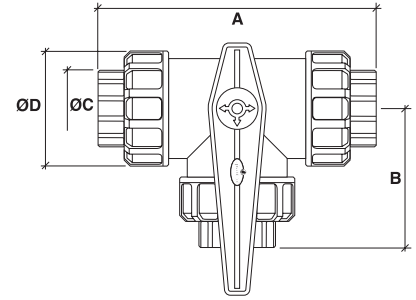
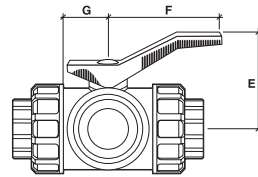
Three-way ball valves

Solvent socket



NBR Joints
(Nitrile rubber)
Blue handle
button

FPM Joints
(Viton)
Black handle
button



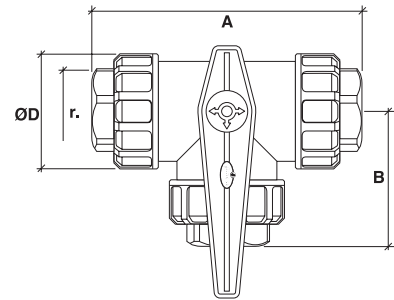
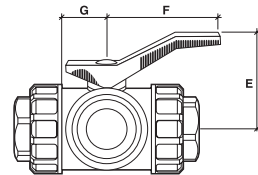
Code NBR	Code FPM	Size	A	B	C	D	E	F	G	Weight (g)	DN
56001	156001	40	186	93	40	84	101	127	44	1055	32
56002	156002	50	223	111,5	50	96	126	143	50	1645	40
56003	156003	63	261	130,5	63	113,5	133,2	143	50	2480	50

Female threaded socket



NBR Joints
(Nitrile rubber)
Blue handle
button

FPM Joints
(Viton)
Black handle
button



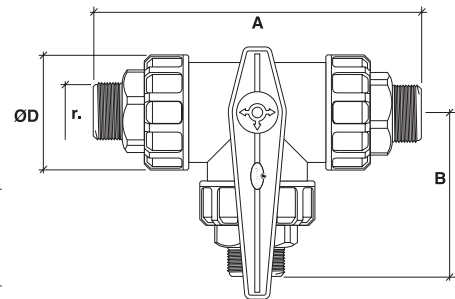
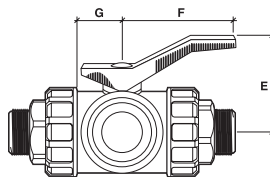
Code NBR	Code FPM	Size	A	B	D	E	F	G	Weight (g)	DN
56004	156004	1 ¼"	182	91	84	101	127	44	1085	32
56005	156005	1 ½"	220	110	96	126	143	50	1720	40
56006	156006	2"	242	121	113,5	133,2	143	50	2580	50

Male threaded socket



NBR Joints
(Nitrile rubber)
Blue handle
button

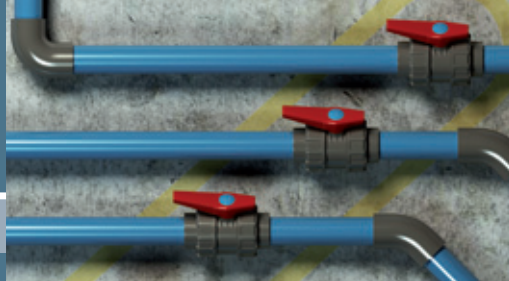
FPM Joints
(Viton)
Black handle
button



Code NBR	Code FPM	Size	A	B	D	E	F	G	Weight (g)	DN
56007	156007	1 ¼"	223	111,5	84	101	127	44	1180	32
56008	156008	1 ½"	267,5	133,7	96	126	143	50	1870	40
56009	156009	2"	305	152,5	113,5	133,4	143	50	2830	50

PVC ball valves

Three-way PVC ball valves



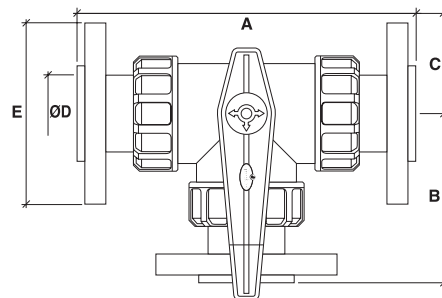
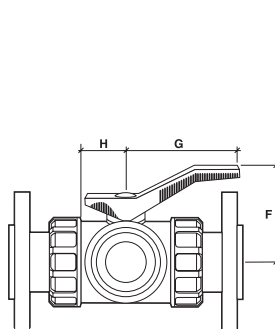
Three-way ball valves

Flanges



NBR Joints
(Nitrile rubber)
Blue handle
button

FPM Joints
(Viton)
Black handle
button

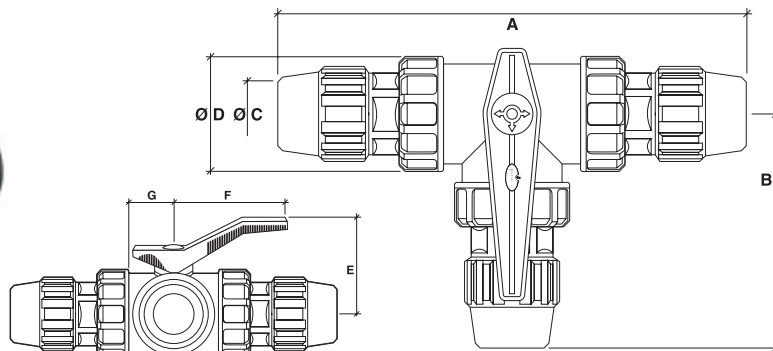


Code NBR	Code FPM	Size	N° Holes	A	B	C	D	E	F	G	H	Weight (g)	DN
56011	156011	50	4	268	134	75	96	110	126	143	50	2170	40
56012	156012	63	4	310	155	82,5	113,5	125	133,2	143	50	3835	50

Polyethylene pipe connector



NBR Joints
(Nitrile rubber)
Blue handle
button



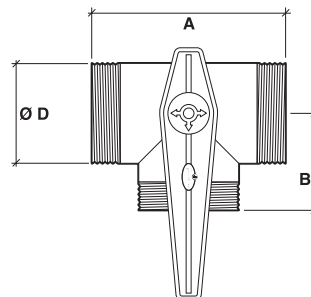
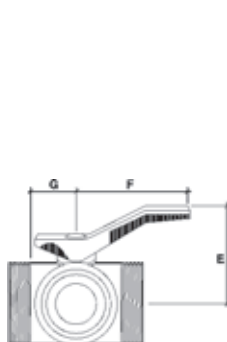
Code NBR	Size	A	B	C	D	E	F	G	Weight (g)	DN
56013	40	325	162,5	40	84	101	127	44	1455	32
56014	50	380	190	50	96	126	143	50	2780	40
56015	63	430	215	63	113,5	133,2	143	50	4115	50

Central body



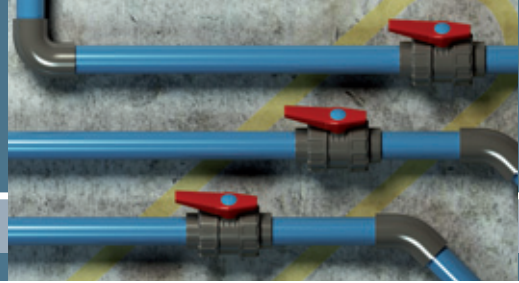
NBR Joints
(Nitrile rubber)
Blue handle
button

FPM Joints
(Viton)
Black handle
button



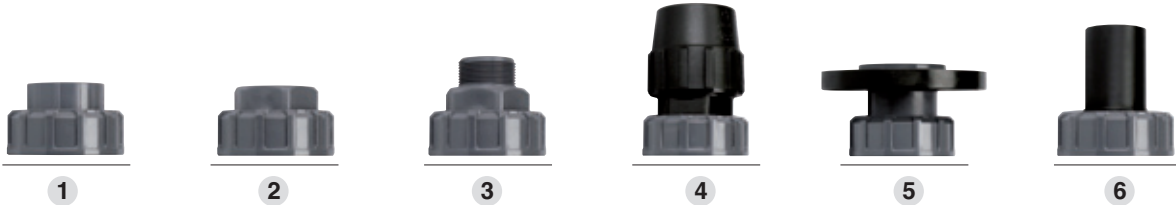
Code NBR	Code FPM	Size	A	B	C	D	E	F	Weight (g)	DN
56016	156016	40	125	63	62	71	101	127	-	32
56017	156017	50	145	75	71	83	126	143	-	40
56018	156018	63	167	89	81	98	133	143	-	50

PVC ball valves



Possible combinations

These valves allow for special mounting made easy.
Made available separately by request. (See accessories on page 57)



It is possible to make the same assembling with a three ways valve.

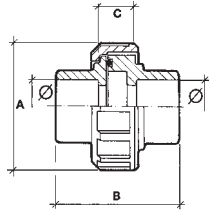
Whichever of the ends 1, 2, 3, 4, 5 and 6 can be used with the body to make the indicated combination.

Example: With the 1 + the 3, we obtain a mixed valve, 1 + 3, with female to glue on one side and male to thread on the other side.



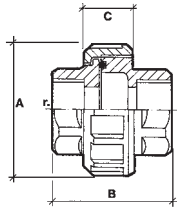
3 piece PVC unions

Solvent socket



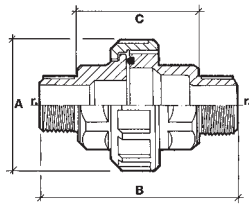
Code	Size	A	B	C	DN
54001	20	48	46	14	15
54002	25	56	56,7	18,2	20
54003	32	69	65,7	21,7	25
54004	40	83	73,5	21,5	32
54005	50	96	88,5	26,5	40
54006	63	113,7	106	28	50

Female threaded socket



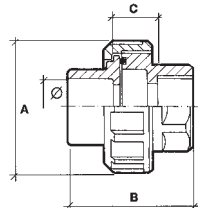
Code	Size	A	B	C	DN
54007	1/2"	48	41	18	15
54008	3/4"	57	53	23	20
54009	1"	68,5	66,5	35,5	25
54010	1 1/4"	83	69	26	32
54011	1 1/2"	96	84,5	37,5	40
54012	2"	113,4	30	33,5	50

Male threaded socket



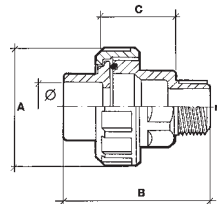
Code	Size	A	B	C	DN
54013	1/2"	48,7	65	40,2	15
54014	3/4"	57	85	53	20
54015	1"	68,7	99	67	25
54016	1 1/4"	83	111	71	32
54017	1 1/2"	96	134,5	85,5	40
54018	2"	113,5	148,5	91	50

Solvent socket / female threaded socket



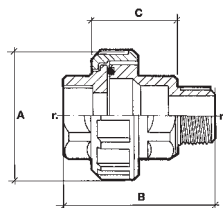
Code	Size	A	B	C	DN
54019	20-1/2"	48	43,5	15,5	15
54020	25-3/4"	57	55	21	20
54021	32-1"	68,5	66	28	25
54022	40-1 1/4"	83,4	71	25	32
54023	50-1 1/2"	96	87	32	40
54024	63-2"	113,5	98,5	33,8	50

Solvent socket / male threaded socket



Code	Size	A	B	C	DN
54025	20-1/2"	48	55	27	15
54026	25-3/4"	57	71,5	36	20
54027	32-1"	68,8	83	45,5	25
54028	40-1 1/4"	83	91,5	46	32
54029	50-1 1/2"	96	111	56	40
54030	63-2"	113	126	61	50

Female threaded socket / male threaded socket



Code	Size	A	B	C	DN
54031	1/2"	48	53	29	15
54032	3/4"	57	68	37	20
54033	1"	68,8	82	50	25
54034	1 1/4"	83	88	56	32
54035	1 1/2"	96	109	61	40
54036	2"	113,5	121	64	50