

Antelco Take-Off fittings provide an easy to install method of connecting low pressure irrigation tubing and drip lines to LDPE supply lines.

Features

- Reduce time and installation costs.
- 8 mm x 13 mm Elbow suitable for installation from 19 mm LDPE tube.
- 10 mm inlet fittings suitable for installation from 25 mm LDPE tube.
- Take-Off Elbows are ideal for installing drip lines at any angle to the supply line ensuring parallel lateral lines in sub surface or above ground drip systems.

Applications

Sub surface and above ground drip irrigation systems and landscape watering applications.



Take-Off Fittings

TYPE	ORDER CODE	PACK QUANTITY	PACKS PER CARTON	CARTON (kg)
TAKE-OFF JOINER 10 mm x 13 mm	46405	25	120	11.4
TAKE-OFF JOINER 10 mm x 14 mm	46395	25	108	11.3
TAKE-OFF ELBOW 10 mm x 13 mm	46415	25	90	12.1
TAKE-OFF ELBOW 10 mm x 14 mm	46435	25	80	12.0
TAKE-OFF ELBOW 8 mm x 13 mm	46425	25	100	12.4



Take-Off Joiner
10 mm x 13 mm



Take-Off Joiner
10 mm x 14 mm



Take-Off Elbow
10 mm x 13 mm

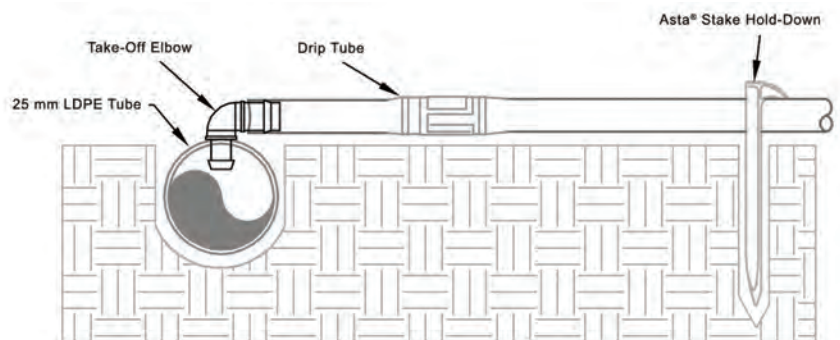
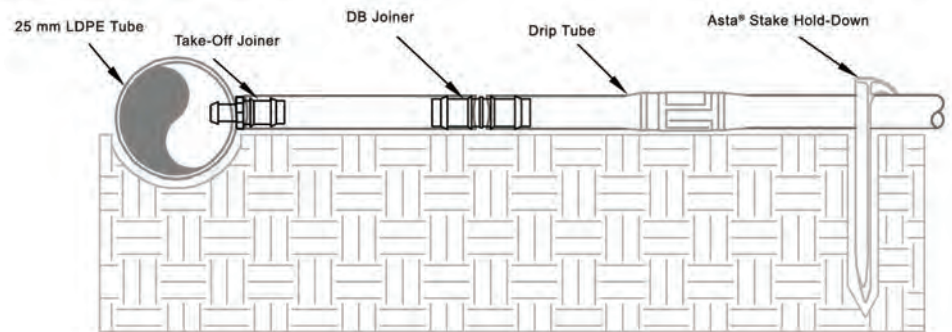


Take-Off Elbow
10 mm x 14 mm

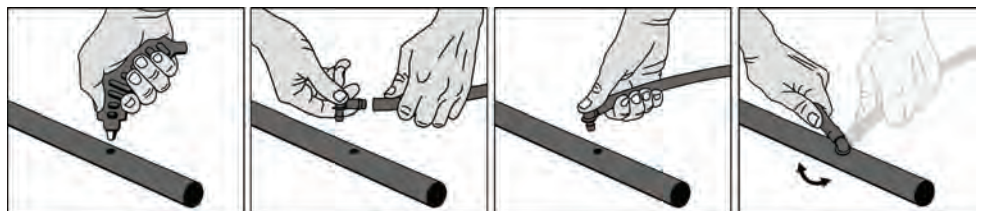


Take-Off Elbow
8 mm x 13 mm

Applications



Installation



- To install, use an 8 mm hole punch for Take-Off Elbow 8 mm x 13 mm.
- Use a 10 mm hole punch for 10 mm x 13 mm & 10 mm x 14 mm models.